

MOBILE HOME SPECIFICATIONS

Roof

Black EPDM on piece rubber roof
Black Roof Trims / Grey Fascias
100mm insulation between roof joists

Walls

70mm thick insulated COMPOSITE WOOD
External Finish : Oyster Grey woodgrain
Internal finish : Oyster Grey woodgrain

Corner Posts and Joiners

Oyster Grey

Windows and Doors

PVC u in Anthracite Grey woodgrain in/out
Double Glazed : 4mm Toughened Low E
glass/argon fill
Grey Cills
NO Internal blinds within sealed units

Floor

43mm insulated chipboard sub floor
finished floor TBC Pewteroak 7880

Base Frame

150x45mm C24 timber frame supported on
concrete posts.
Room raised off ground level by 200mm,
with Black skirting scribed all round the
base.

Electrics - see quote for full details

18th edition fuse board
LED downlighters
White flush double sockets
White light switches
All electrics carried out by approved
contractors, and tested with EIC .

Client

Site
address

title

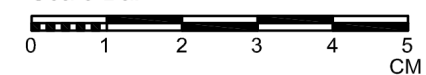
Client approval

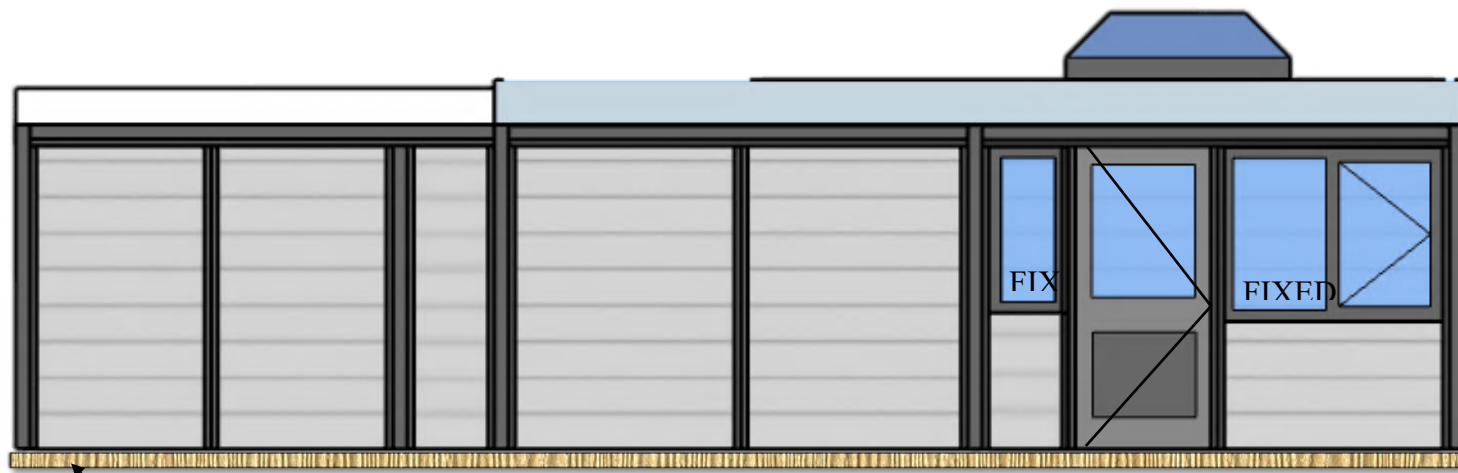
Date :



Scale	1to50	Dwg. Size	A3
Dwg. No.	9648L/01/A	Date	21/5/24
Dwg by	D Price		

Scale Bar





Treated timber joist base

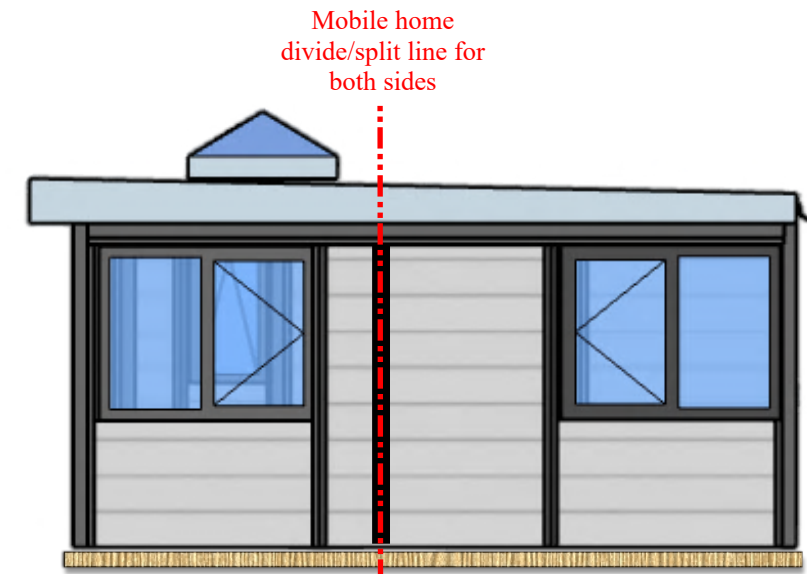
9650

Proposed Front Elevation



Treated timber joist base

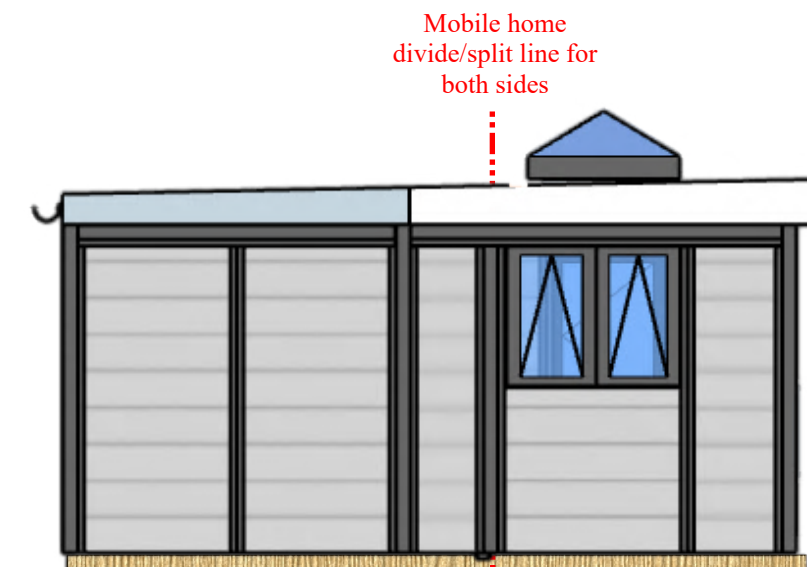
Proposed Rear Elevation



Mobile home
divide/split line for
both sides

4871

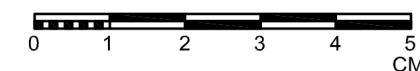
Proposed Left Side Elevation



Mobile home
divide/split line for
both sides

Proposed Right Side Elevation

Scale Bar



MOBILE HOME SPECIFICATIONS

Roof

Black EPDM on piece rubber roof
Black Roof Trims / Grey Fascias
100mm insulation between roof joists

Walls

70mm thick insulated COMPOSITE WOOD
External Finish : Oyster Grey woodgrain
Internal finish : Oyster Grey woodgrain

Corner Posts and Joiners

Oyster Grey

Windows and Doors

PVC u in Anthracite Grey woodgrain in/out
Double Glazed : 4mm Toughened Low E
glass/argon fill
Grey Cills
NO Internal blinds within sealed units

Floor

43mm insulated chipboard sub floor
finished floor TBC Pewteroak 7880

Base Frame

150x45mm C24 timber frame supported on
concrete posts.
Room raised off ground level by 200mm,
with Black skirting scribed all round the
base.

Electrics - see quote for full details

18th edition fuse board
LED downlighters
White flush double sockets
White light switches
All electrics carried out by approved
contractors, and tested with EIC .

Client
Job Number

Site
address

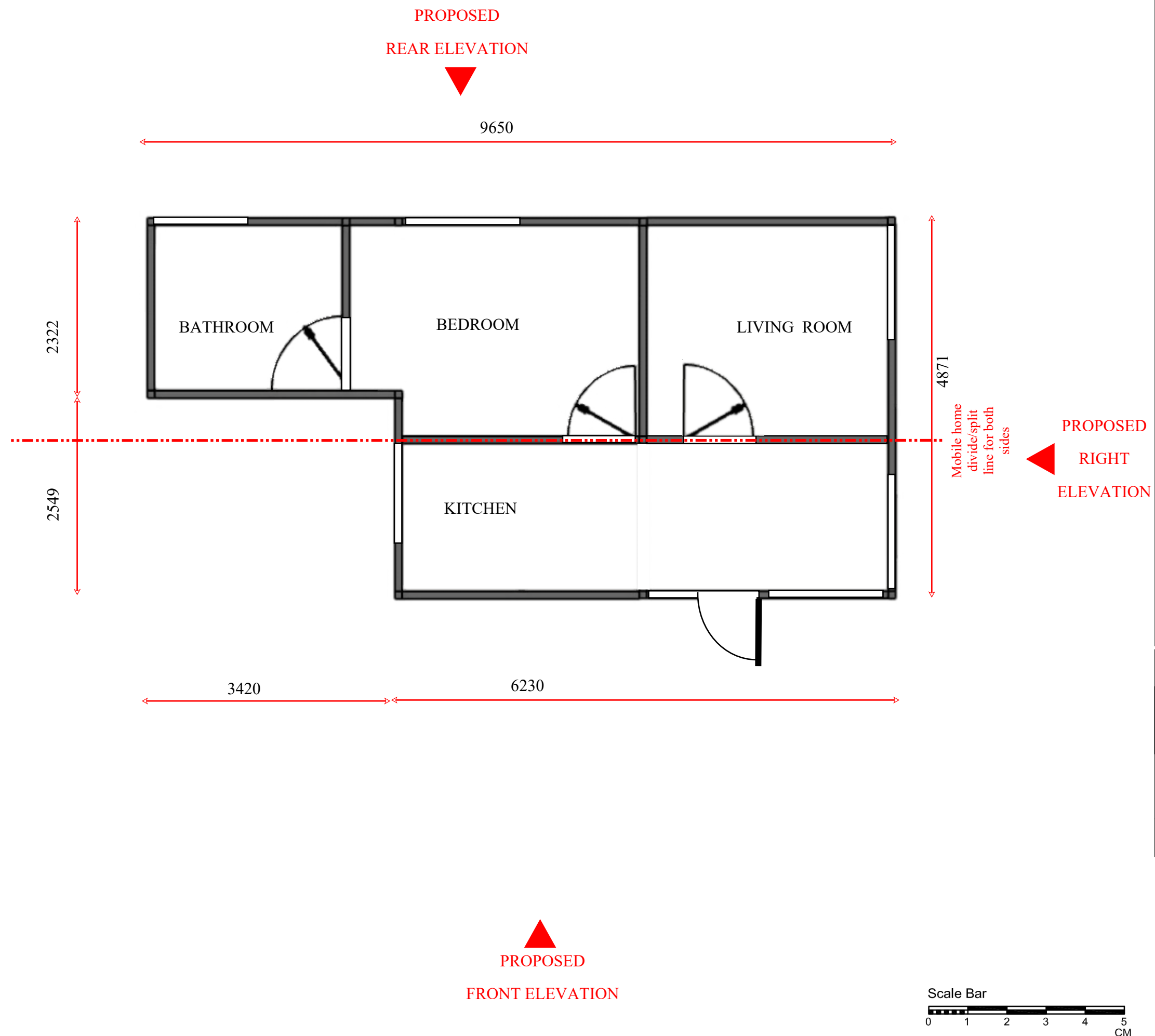
title

Client approval

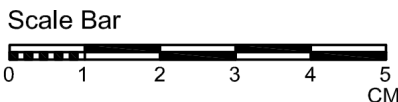
Date :

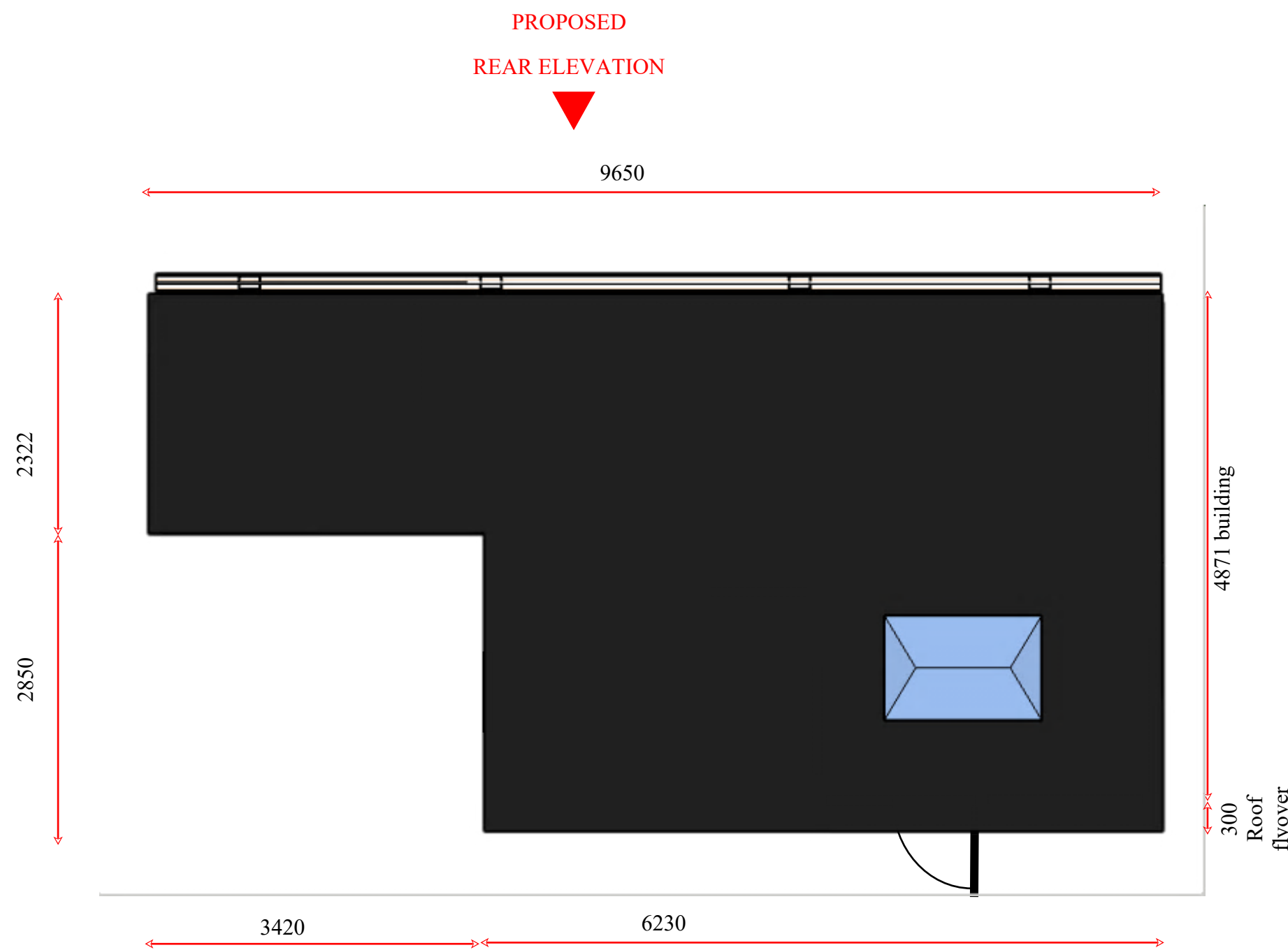


Scale	1to50	Dwg. Size	A3
Dwg. No.	9648L/02/A	Date	21/5/24
Dwg by	D Price		



MOBILE HOME SPECIFICATIONS			
Roof			
Black EPDM on piece rubber roof Black Roof Trims / Grey Fascias 100mm insulation between roof joists			
Walls			
70mm thick insulated COMPOSITE WOOD External Finish : Oyster Grey woodgrain Internal finish : Oyster Grey woodgrain			
Corner Posts and Joiners			
Oyster Grey			
Windows and Doors			
PVC u in Anthracite Grey woodgrain in/out Double Glazed : 4mm Toughened Low E glass/argon fill Grey Cills NO Internal blinds within sealed units			
Floor			
43mm insulated chipboard sub floor finished floor TBC Pewteroak 7880			
Base Frame			
150x45mm C24 timber frame supported on concrete posts. Room raised off ground level by 200mm, with Black skirting scribed all round the base.			
Electrics - see quote for full details			
18 th edition fuse board LED downlighters White flush double sockets White light switches All electrics carried out by approved contractors, and tested with EIC .			
Client			
Site address			
title			
Client approval			
Date :			
Scale	1to50	Dwg. Size	A3
Dwg. No.	9648L/03/A	Date	21/5/24
Dwg by	D Price		





PROPOSED
LEFT
ELEVATION

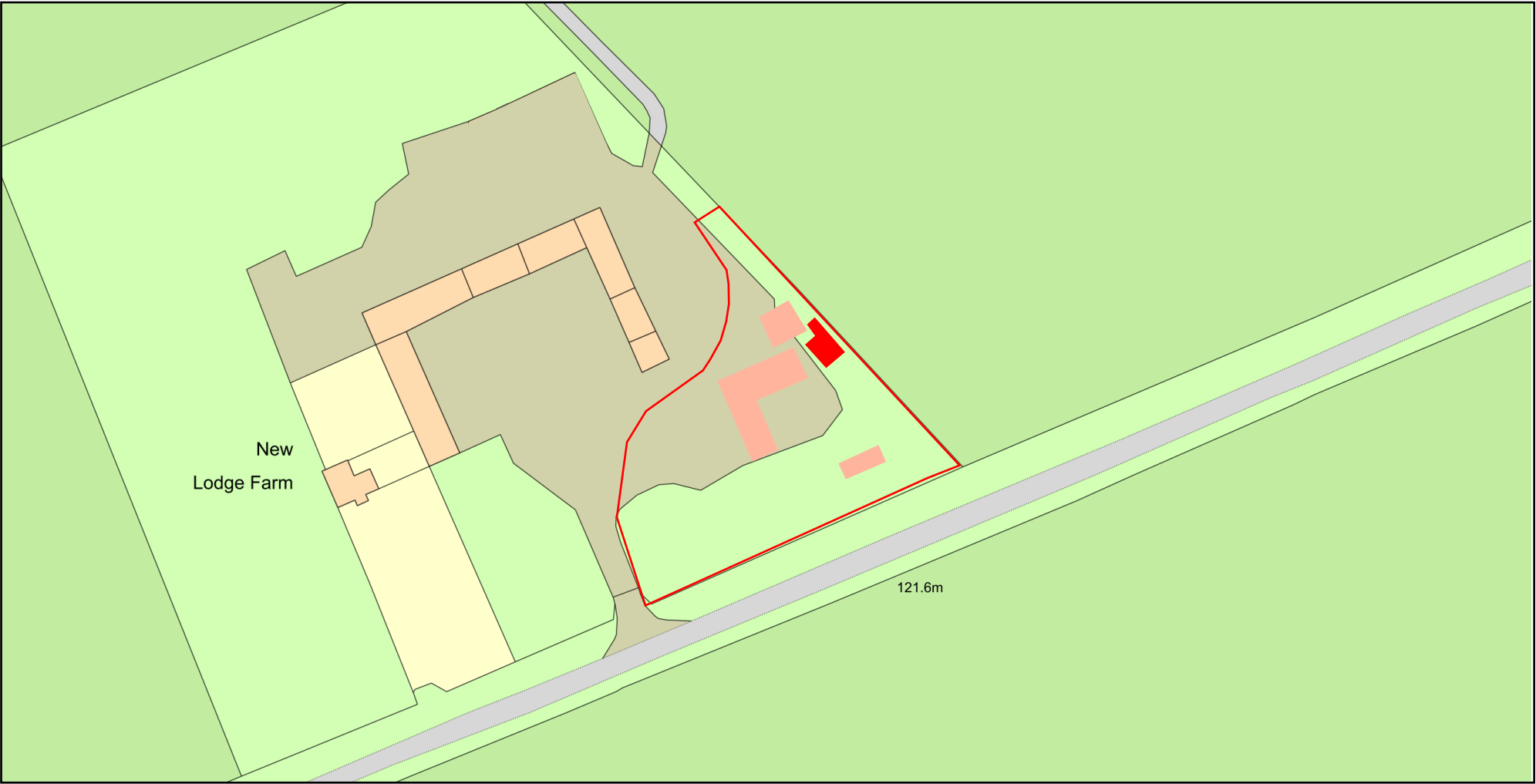
PROPOSED
REAR ELEVATION

PROPOSED
RIGHT
ELEVATION



MOBILE HOME SPECIFICATIONS			
Roof			
Black EPDM on piece rubber roof Black Roof Trims / Grey Fascias 100mm insulation between roof joists			
Walls			
70mm thick insulated COMPOSITE WOOD External Finish : Oyster Grey woodgrain Internal finish : Oyster Grey woodgrain			
Corner Posts and Joiners			
Oyster Grey			
Windows and Doors			
PVC u in Anthracite Grey woodgrain in/out Double Glazed : 4mm Toughened Low E glass/argon fill Grey Cills NO Internal blinds within sealed units			
Floor			
43mm insulated chipboard sub floor finished floor TBC Pewteroak 7880			
Base Frame			
150x45mm C24 timber frame supported on concrete posts. Room raised off ground level by 200mm, with Black skirting scribed all round the base.			
Electrics - see quote for full details			
18 th edition fuse board LED downlighters White flush double sockets White light switches All electrics carried out by approved contractors, and tested with EIC .			
Client			
Site address			
title			
Client approval			
Date :			
Scale	1to50	Dwg. Size	A3
Dwg. No.	9648L/04/A	Date	21/5/24
Dwg by	D Price		

Oak House



Plan Produced for: Dale Perry
Date Produced: 21 May 2024
Plan Reference Number: TQRQM24142152356307
Scale: 1:1250 @ A4
©Crown copyright and database rights 2023 OS 100042766

MOBILE HOME SPECIFICATIONS

Roof

Black EPDM on piece rubber roof
Black Roof Trims / Grey Fascias
100mm insulation between roof joists

Walls

70mm thick insulated COMPOSITE WOOD
External Finish : Oyster Grey woodgrain
Internal finish : Oyster Grey woodgrain

Corner Posts and Joiners

Oyster Grey

Windows and Doors

PVC u in Anthracite Grey woodgrain in/out
Double Glazed : 4mm Toughened Low E
glass/argon fill
Grey Cills
NO Internal blinds within sealed units

Floor

43mm insulated chipboard sub floor
finished floor TBC Pewteroak 7880

Base Frame

150x45mm C24 timber frame supported on
concrete posts.
Room raised off ground level by 200mm,
with Black skirting scribed all round the
base.

Electrics - see quote for full details

18th edition fuse board
LED downlighters
White flush double sockets
White light switches
All electrics carried out by approved
contractors, and tested with EIC .

Client
Job Number

Site
address

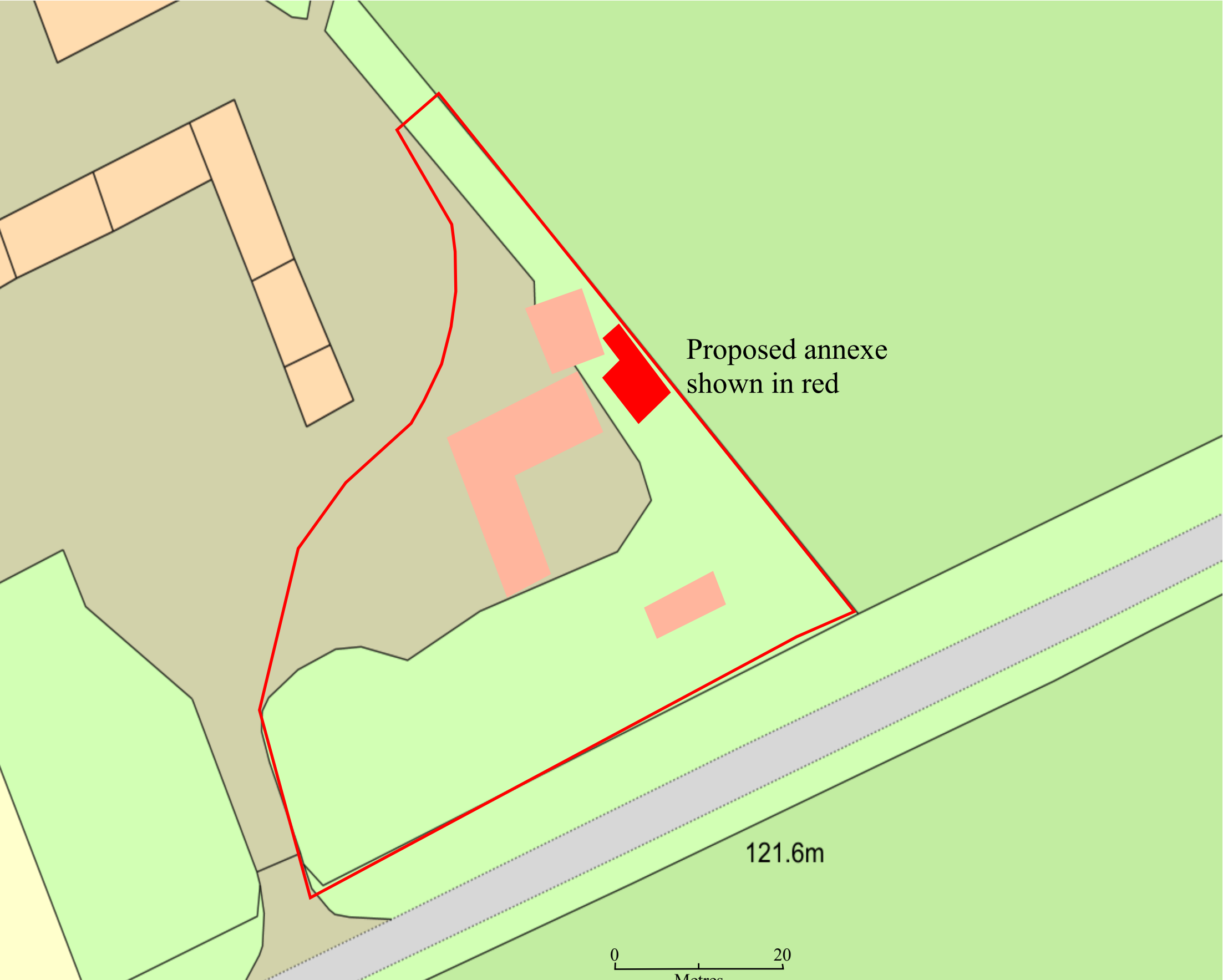
title

Client approval

Date :

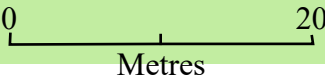


Scale	1:1250	Dwg. Size	A3
Dwg. No.	9648L/ 5	Date	21/5/24
Dwg by	D Price		



Proposed annexe
shown in red

121.6m



MOBILE HOME SPECIFICATIONS

Roof

Black EPDM on piece rubber roof
Black Roof Trims / Grey Fascias
100mm insulation between roof joists

Walls

70mm thick insulated COMPOSITE WOOD
External Finish : Oyster Grey woodgrain
Internal finish : Oyster Grey woodgrain

Corner Posts and Joiners

Oyster Grey

Windows and Doors

PVC u in Anthracite Grey woodgrain in/out
Double Glazed : 4mm Toughened Low E
glass/argon fill
Grey Cills
NO Internal blinds within sealed units

Floor

43mm insulated chipboard sub floor
finished floor TBC Pewteroak 7880

Base Frame

150x45mm C24 timber frame supported on
concrete posts.
Room raised off ground level by 200mm,
with Black skirting scribed all round the
base.

Electrics - see quote for full details

18th edition fuse board
LED downlighters
White flush double sockets
White light switches
All electrics carried out by approved
contractors, and tested with EIC .

Client
Job Number

Site
address

title

Client approval

Date :



Scale	1:500	Dwg. Size	A3
Dwg. No.	9648L/ 6	Date	21/5/24
Dwg by	D Price		